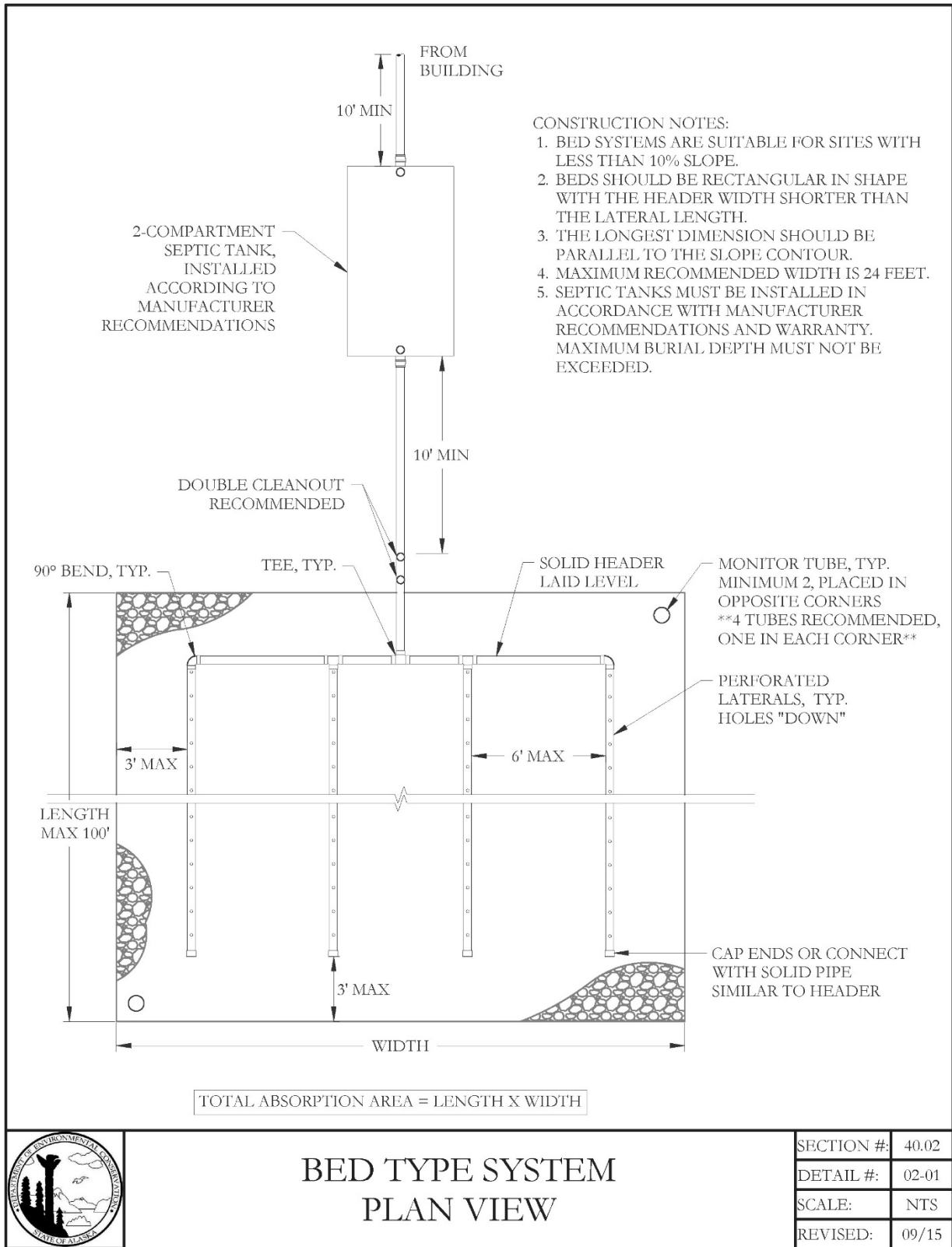
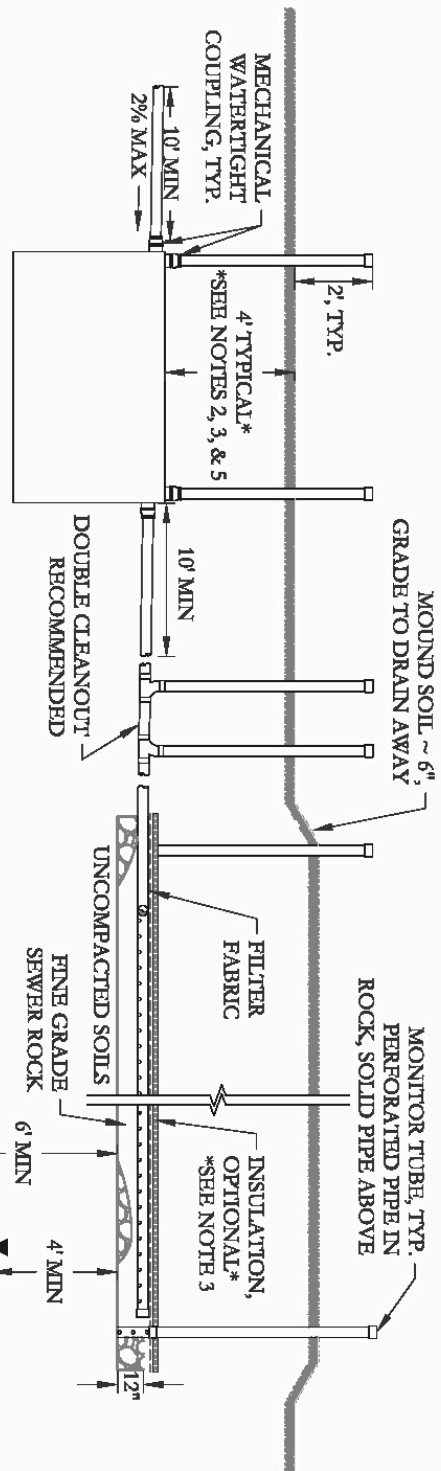


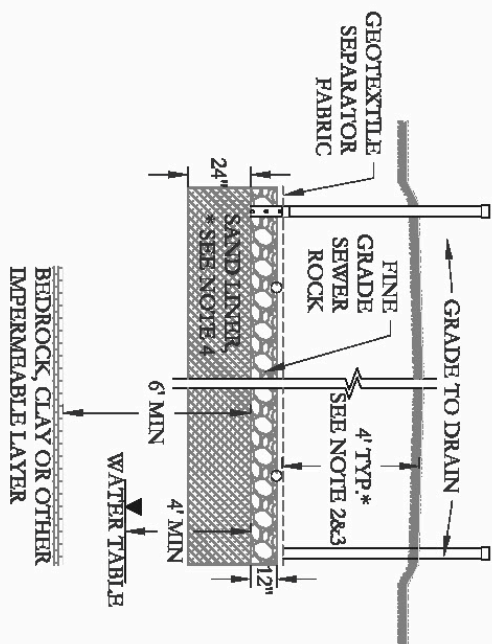
Article 2.2 Standard Drawings for Bed Type Systems





CONSTRUCTION NOTES:

1. ALL LEACH FIELD PIPING (SOLID AND PERFORATED) SHALL BE LAID LEVEL AND BEDDED IN ROCK TO THE SPRINGLINE (CENTER LINE OF PIPE). MINIMUM 12 INCHES OF ROCK MUST BE PLACED BELOW SPRINGLINE.
2. MINIMUM GROUND COVER REQUIREMENTS VARY BY REGIONS. REFER TO DIVISION 20.
3. ONE (1) INCH OF POLYSTYRENE INSULATION MAY BE SUBSTITUTED PER FOOT OF SOIL COVER UP TO TWO (2) FEET MAXIMUM. MINIMUM SOIL COVER SHALL NOT BE REDUCED TO LESS THAN TWO (2) FEET.
4. SAND LINER, MEETING THE GRADATION SPECIFICATION IN ARTICLE 3.18, REQUIRED IF GRAVEL SOILS PERCOLATE FASTER THAN 1 MIN/INCH.
5. SEPTIC TANKS MUST BE INSTALLED IN ACCORDANCE WITH MANUFACTURER RECOMMENDATIONS AND WARRANTY. MAXIMUM BURIAL DEPTH MUST NOT BE EXCEEDED.



BED TYPE SYSTEM PROFILE VIEW

SECTION #:	40.02
DETAIL #:	02-02
SCALE:	NTS
REVISED:	09/15

